

# Irwell: Basin Mounted Mixer Tap

Architects  
Data File

## Product Detail



Product: Irwell  
Code: TP1200

Issue: 1  
Date: 09-07-15

### Product description:

Single-command automatic shut-off basin mixer, with adjustment for temperature on the control knob. Automatic delayed shut-off ~7 seconds and flow rate 3l/ minute, with scale-proof aerator. Maximum temperature limitation and flow rate are adjustable without dismantling the cartridge, nor cutting-off water.

- Open by pressing the push button and automatic delayed shut-off without hand contact.
- Temperature selection by turning the control knob.
- Use: recommended for highly frequented public places, and disabled persons facilities (smooth opening).



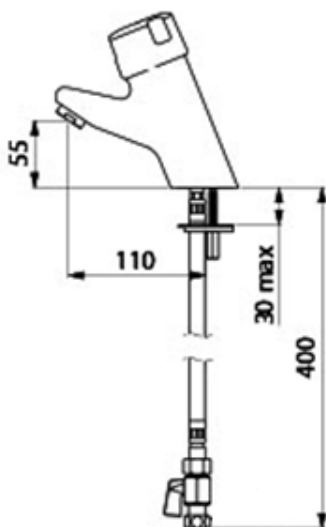
**Product:** Irwell  
**Code:** TP1200

### Technical Detail:

**Material:** Brass  
**Finish:** Chrome  
**Self-Closing:** Yes - 7 Secs  
**Inlet:** 15mm Compression  
**Use:** High  
**Stop cock:** Yes

The flow rate is pre-set at the factory at 3 lpm (at 3 bar) for washbasins and 12 lpm (at 3 bar) for showers.

### Lined Drawing:



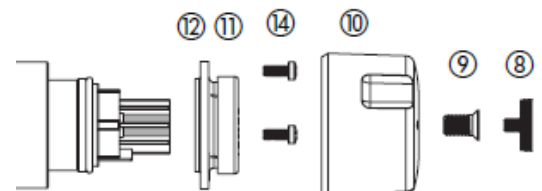
- **For washbasins** the flow rate can be adjusted directly on the adjustable flow straightener using a 2.5mm Allen key:

- Notch n°1 = 3 lpm (at 3 bar).
- Notch n°2 = 4 lpm (at 3 bar).
- Notch n°3 = 5 lpm (at 3 bar).



- **If the adjustable flow straightener on a washbasin tap is replaced by an aerator, or a standard flow straightener is fitted to a shower,** the flow rate can be adjusted without shutting-off the water supply or removing the mechanism (fig. 5):

- Unscrew the central cap ⑧ using a pair of circlip pliers.
- Insert a 3mm Allen key in the centre of the push-button. Open the valve and turn the Allen key to the achieve the desired flow rate.
- Replace the central cap ⑧.



## Irwell: Basin Mounted Mixer Tap

### Installation Detail

- Under no circumstances should the non-return valves be removed from the water inlets.
- Install the filter joints supplied. They will protect the non-return valves from damage.
- Supply with cold water and hot water at a maximum temperature of 60°C, and balance the pressure between the hot and cold water ( $\Delta P < 1$  bar). **Ensure that hot water is always delivered from the left side and cold from the right.** Maximum supply pressure is 10 bar (we recommend 1 to 5 bar dynamic pressure). Take care not to pinch the PEX flexibles.

#### Washbasins

- 34mm diameter hole for installation.
- Mount the body of the mixer on the washbasin and tighten the nuts on the fixing plate.
- Ensure a waterproof seal between the mixer and the work plan that is appropriate for the type of installation.

IT IS THE INSTALLER'S RESPONSIBILITY TO:

- ENSURE THAT THE RECESSED MOUNTING BOX IS WATERTIGHT TO PREVENT ANY WATER INGRESS INTO THE INSTALLATION.
- GUARD AGAINST THE ACCIDENTAL PRESENCE OF WATER IN THE RECESSED MOUNTING BOX AND ENSURE THAT THERE IS NO WATER STAGNATION AND THAT ANY WATER (CONDENSATION, RUN-OFF, LEAKAGE, ETC.) DRAINS AWAY.
- ENSURE THAT THE SEALS/JOINTS BETWEEN THE WALL PLATE AND THE BODY OF THE MIXER ARE CHECKED REGULARLY (AT LEAST ONCE A YEAR) AND REPLACE THE SEALS/WASHERS IF NECESSARY.

